



REPORT OF QUALITY AND QUANTITY

F590201_2081744_001
 ID: 202600577222
 Page N°: 1 / 6

PRINCIPAL : TIGER CEMENT LIMITED – ASPHALTCEMENT (BITUMAN PRODUCT) PLOT NO.06,
 : SECTOR B-X, MEHRAN AVENUE, EXPORT PROCESSING ZONE, KARACHI –
 PAKISTAN.

GOODS DESCRIPTION AS PROVIDED BY PRINCIPAL : BITUMEN ASPHALT PACKED IN NEW STEEL DRUMS TIGER BRAND 35/50

VESSEL NAME : MSC PATNAREE III - XA606R
 : MSC TRACY V – OB607R
 : MSC SHRINIKA V – OB609R

B/L's NUMBER : MEDUP6095269 DATED 07-FEB-2026
 : MEDUP6119713 DATED 02-MAR-2026
 : MEDUP6132542 DATED 09-MAR-2026

B/L's QUANTITY : 2750 DRUMS IN 25X20FT CONTAINERS
 : 2200 DRUMS IN 20X20FT CONTAINERS
 : 2200 DRUMS IN 20X20FT CONTAINERS

INSPECTION PLACE : KEPZ – KARACHI

INSPECTION PERFORMED ON : 29 JANUARY 2026 TO 27 FEBRUARY 2026

This is to report that, in accordance with instructions received from our principal, we attended their advised location Karachi Export Processing Zone – Karachi on 29,30 JANUARY, 02, 21, 23, 26, 27 FEBRUARY 2026 to perform random sampling from the cargo tendered in steel drums, carry out the requested analyses on final composite sample. Whereas to witness the loading/stuffing operation of cargo into containers and weighbridge weighing. On which, we report our findings as follows,

TENDERED CARGO

At the time of our intervention, cargo was tendered in steel drums and laying in an open area on cemented floor.

PACKING

The cargo was in solid form and filled/packed in steel drums, mouth covered by lid. As far as visible, the tendered drums were found apparently in sound condition.

MARKING

Following stencil marking was found pasted on the tendered steel drums.





REPORT OF QUALITY AND QUANTITY

F590201_2081744_001
ID: 202600577222
Page N^o: 2 / 6

RANDOM SAMPLING

A total of 19 drums were selected randomly on a cube root basis as per ASTM D140/D140M (Standard Practice for Sampling Asphalt Materials) from the total tendered cargo of 7150 drums.

Upon completion of the sampling exercise, the collected sample was split in 03 sets, preserved in a metal container, kept in a double WPP bag, duly labeled, sealed, and brought to the SGS Karachi office.

SAMPLE DISTRIBUTION

- One set of sealed sample submitted to the subcontracted lab for the analysis of principal requested parameters as tabulated below.
- One set of sealed sample handed over to the principal representative for their reference and record.
- One set of sealed samples retained with SGS for the period of one month from the date of sampling, unless otherwise instructed.

ANALYSIS

Analysis results obtained from the subcontracted lab are reproduced as follows,

Sr. #	Test Parameter	Test Method	Results
01	Specific Gravity at 25/25 °C	ASTM D-70	1.042
02	Ductility @ 25 °C, 5cm/min, cm	ASTM D-113	>100
03	Penetration @ 25 °C, 100 gm, 5 Sec, 1/10mm	ASTM D-5	43
04	Flash Point (COC), °C	ASTM D-92	346
05	Softening Point (R & B), °C	ASTM D-36	52
06	Loss on heating @ 163°C 5 hrs. Wt% _s	ASTM D-6	0.129
07	Drop in penetration after heating%	ASTM D-5/D-6	18
08	Retained Penetration after TFOT, %	ASTM D-5	82
09	Penetration after loss on heating 25°C, % of original	ASTM D-5/D-6	82
10	Solubility In Trichloro Ethylene, Wt%	ASTM D-2042	99.8
11	Spot test	ASHTO T-102	Negative

WITNESSING OF THE LOADING / STUFFING OPERATION

Prior to the loading of cargo into containers, a plastic sheet was attached to both sides of the container's wall, and a plastic sheet was placed on the container's floor. During our intervention, all the drums were loaded/stuffed into containers with the help of a forklift. As per the client/shipper's tally and our random check, a total of 7150 drums (each container load with 110 drums) were loaded into 65x20ft containers.

Details of each container number are given as follows,

No.	Container No	No. of Drums	Wt. Of Truck with Loaded Container in Kg	Wt. Of Truck with Empty Container in Kg	Gross weight of cargo (kg)	SGS Seal No
Containers covered under BL #MEDUP6095269						
1	TCLU 302617-8	110	39420	18290	21130	J017248
2	MEDU 558553-9	110	35110	13970	21140	J017249
3	FTAU 117334-0	110	36400	15240	21160	J017250
4	GLDU 547442-5	110	38360	17200	21160	J017251
5	MSDU 147022-5	110	35760	14620	21140	J017252
6	MEDU 341453-7	110	35620	14490	21130	J017253



REPORT OF QUALITY AND QUANTITY

F590201_2081744_001
ID: 202600577222
Page N°: 3 / 6

7	FSCU 794560-4	110	36970	15830	21140	J017254
8	TEMU 137365-8	110	30800	9760	21040	J017255
9	TCKU 223682-4	110	36440	15320	21120	J017256
10	MEDU 538816-5	110	35430	14280	21150	J023999
11	MEDU 616976-8	110	39460	18400	21060	J024000
12	TLLU 220294-3	110	35100	13980	21120	J017271
13	TCKU 179944-3	110	38250	17090	21160	J017272
14	TGBU 380378-4	110	35320	14210	21110	J017273
15	TGHU 143518-1	110	35580	14470	21110	J017274
16	MSDU 141877-8	110	36350	15300	21050	J017275
17	BMOU 201855-1	110	36450	15350	21100	J017276
18	MSCU 668320-9	110	35870	14810	21060	J017277
19	MEDU 638377-0	110	30950	9850	21100	J017278
20	TTNU 103620-1	110	38180	17140	21040	J017279
21	TGHU 016823-9	110	35880	14740	21140	J024051
22	CAIU 373238-9	110	36550	15390	21160	J024052
23	CARU 381224-3	110	35510	14410	21100	J024053
24	FCIU 574202-3	110	35620	14460	21160	J024054
25	TRHU 351018-3	110	36820	15680	21140	J024055
Total		2750	902,200	374,280	527,920	--

Containers covered under BL # MEDUP6119713

26	UETU 270789-0	110	36390	15240	21150	J029561
27	MEDU 333262-9	110	31040	9900	21140	J029562
28	TCKU 146447-6	110	35140	14010	21130	J029563
29	FCIU 578164-7	110	37680	16520	21160	J029564
30	MSDU 165088-6	110	36410	15260	21150	J029565
31	MEDU 505270-9	110	35950	14830	21120	J029566
32	FCIU 434009-8	110	38230	17100	21130	J029567
33	FCIU 264713-0	110	35680	14530	21150	J029568
34	MAGU 239066-4	110	38220	17060	21160	J029569
35	MEDU 381705-0	110	35840	14710	21130	J029570
36	CAXU 331148-4	110	30970	9840	21130	J029571
37	DFSU 271048-0	110	35140	13980	21160	J029572
38	MSDU 121767-0	110	35710	14570	21140	J029573
39	TGHU 175707-0	110	36410	15260	21150	J029574
40	MEDU 381927-9	110	36570	15450	21120	J029575
41	BEAU 202324-0	110	36920	15770	21150	J029576
42	MEDU 393369-8	110	35800	14640	21160	J029577
43	MEDU 354920-8	110	38340	17220	21120	J029578
44	SEGU 399407-2	110	35410	14280	21130	J029579
45	TCLU 263758-9	110	35690	14550	21140	J029580
Total		2200	717,540	294,720	422,820	--



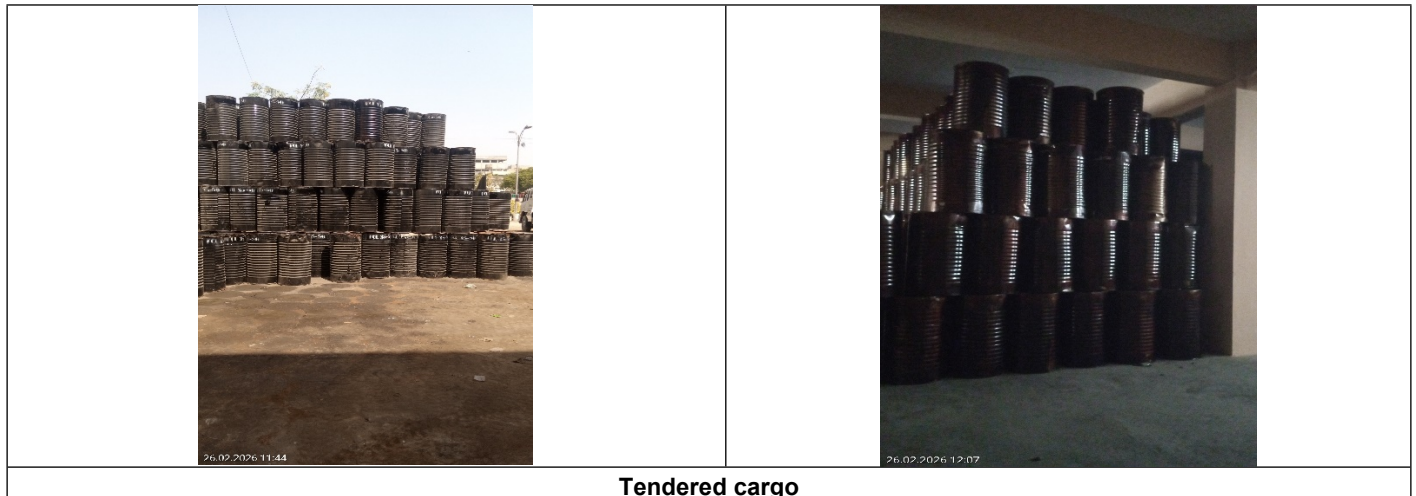
REPORT OF QUALITY AND QUANTITY

F590201_2081744_001
 ID: 202600577222
 Page N°: 4 / 6

Containers covered under BL #MEDUP6132542

46	MSBU 100574-0	110	35720	14570	21150	J029581
47	MSMU 261856-6	110	35700	14550	21150	J029582
48	MSMU 180549-6	110	36440	15280	21160	J029583
49	CAIU 275531-1	110	38270	17090	21180	J029584
50	TRHU 127900-7	110	35740	14590	21150	J029585
51	MEDU 253848-8	110	30930	9770	21160	J029586
52	MSMU 186398-0	110	36040	14880	21160	J029587
53	MSDU 185277-9	110	35880	14720	21160	J029588
54	TEMU 117886-2	110	36770	15620	21150	J029589
55	BMOU 270457-2	110	35750	14590	21160	J029590
56	MEDU 331855-4	110	35670	14520	21150	J029591
57	IPXU 312513-0	110	36560	15410	21150	J029592
58	TGBU 133452-2	110	35750	14600	21150	J029593
59	CXDU 139541-5	110	38180	17020	21160	J029594
60	MEDU 376140-7	110	39530	18350	21180	J029595
61	CXDU 121278-8	110	36520	15360	21160	J029596
62	TRHU 196677-0	110	36000	14840	21160	J029597
63	TCKU 391539-4	110	35720	14560	21160	J029598
64	GLDU 965254-6	110	30910	9760	21150	J029599
65	CAIU 668252-7	110	36100	14940	21160	J029600
Total		2200	718,180	295,020	423,160	--
Grand Total		7150	2,337,920	964,020	1,373,900	--

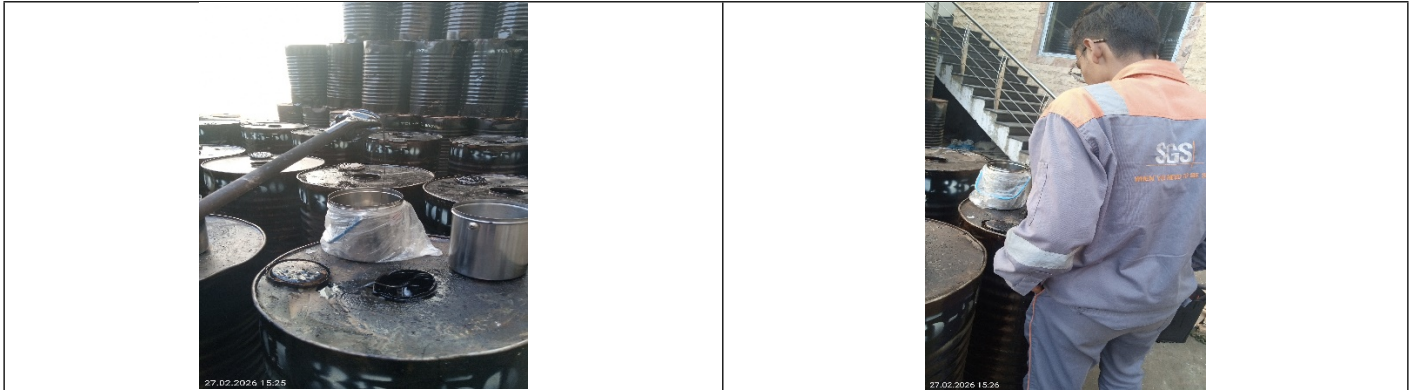
PICTURES



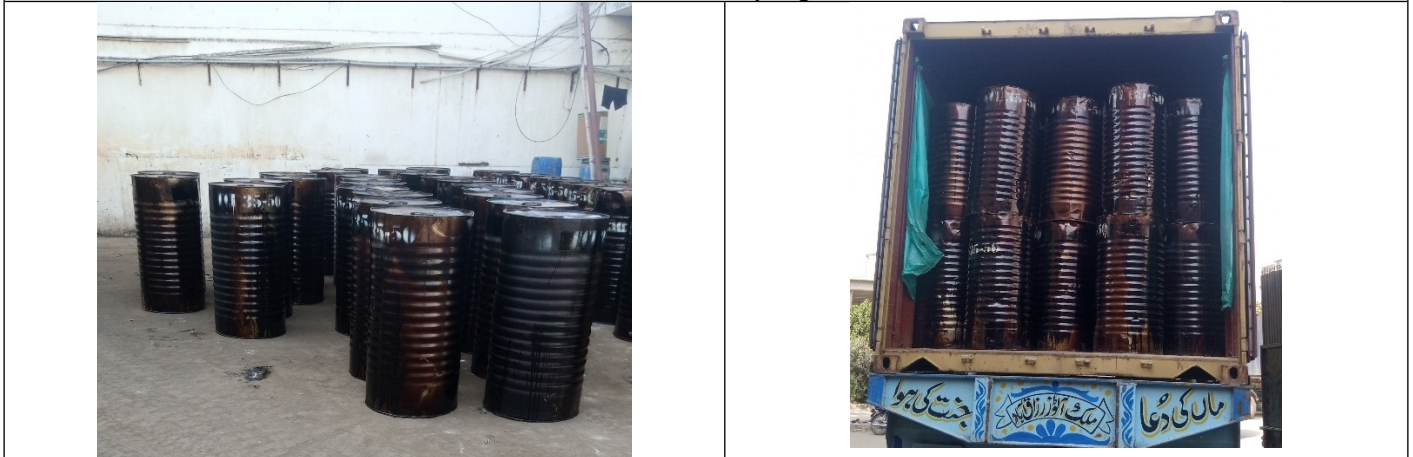


REPORT OF QUALITY AND QUANTITY

F590201_2081744_001
 ID: 202600577222
 Page N°: 5 / 6



Random Sampling



Loaded / Stuffed Cargo



Loaded / Stuffed Cargo



REPORT OF QUALITY AND QUANTITY

F590201_2081744_001
 ID: 202600577222
 Page N°: 6 / 6



Loaded container with SGS Plastic Seal

The responsibility for the above findings is limited to time, date and place of intervention only and does not refer to any other matter. Whereas this report validity is limited to the duration of vessel's voyage.

The manual sampling method was agreed with the SGS Principal, as sampling by more reliable methods that provide probability samples was not possible. The Holder of this document is cautioned that collected MANUAL samples of this type do not satisfy the minimum requirements for probability sampling, and as such cannot be used to draw statistical inferences such as precision, standard error, or bias.

Due to the inaccessibility of part of the cargo, the samples collected have indicative value only and will not necessarily be representative of the entire cargo, but only of that part accessible and sampled at the date, time, and place of inspection. SGS has no responsibility and/or liability for the consequences of any action taken or not taken on the basis of our issued report.

In accordance with principal's instructions, the Company's involvement has been limited to witnessing/observing a third party's intervention(s) at the third party's weighbridge/test house or other facilities and installations used for the intervention(s). The Company's sole responsibility was to be present at the time of the third party's intervention(s) to forward the results, or confirm the occurrence, of the intervention(s). The Company is not responsible for the condition or calibration of apparatus, instruments and measuring devices used, the testing methods applied the qualifications, actions or omissions of the third party's personnel or the testing results.

If the requirements of the client necessitate the analyses of samples by the client's or by any third party's laboratory (non SGS lab) the company will pass on the result of the analysis but without responsibility for its accuracy.

This document is issued by the Company subject to its General Conditions of Service (www.sgs.com/en/Terms-and-Conditions.aspx). Attention is drawn to the limitations of liability, indemnification and jurisdictional issues established therein.

This document is to be treated as an original within the meaning of UCP 600. Any holder of this document is advised that information contained hereon reflects the Company's findings at the time of its intervention only and within the limits of client's instructions, if any. The Company's sole responsibility is to its Client and this document does not exonerate parties to a transaction from exercising all their rights and obligations under the transaction documents. Any unauthorized alteration, forgery or falsification of the content or appearance of this document is unlawful and offenders may be prosecuted to the fullest extent of the law.

Signed and dated in
 KARACHI - Pakistan
 18th March 2026

SGS Pakistan (Private) Limited

